



PRODUCTION MANUAL 2020

VENUE FEATURES

Direct drive in access for all vehicles, including Pantech trucks. (4m w x 4.3m h)
Fully sound proofed **to 120 dB**
Total black out
Full venue draping for optimum sound
Covered floor trenches for cabling
Parking for outside broadcasting vans
24 hour onsite security service Wi-Fi and Ethernet Internet
Performers green rooms, with bathroom facilities and Wi-Fi

DIMENSIONS

Ground level: 49.2m x 30.4m
Floor Load capacity: 10KPa distributed, 1 tonne concentrated

Mezzanine: 13.4m x 30.4m
Floor level: 3.7m above ground level
Floor Load capacity: 5KPa distributed

Internal Height: 9m at eaves, 14m at centre

POWER

Total Power available: 800 amps

Distribution: 4 x EDB, 2 located on southern wall, 1 each on NW wall & NE wall just under mezzanine
Each EDB fitted with 1 x 250amp power lock and 2 x 40amp 3 phase Wilco outlets
8 x GPO around the walls all running off the same circuit.

RIGGING

There are 7 trusses in the auditorium area available for rigging each with multiple load points. There are 3 types of load points.

Portal Frame (Truss)

Multiple load points per each single truss can be used providing the total load for each truss does not exceed a SWL of 8000kg

Load Point Type 1 (LP1)

LP1's can carry up to a maximum 2000kg SWL "vertically".

Adjacent to LP1 is an available redundant or safety hanging point located approximately 300mm away that also carries a maximum 2000kg SWL "vertically". This is designed for safety rigging for the first point. Either one of these points can be loaded with the maximum of 2000kg SWL "vertically" or alternatively the load can be spread over the 2 points to a maximum of 2000kg combined load.

LP1's are located approximately 3 metres apart along each truss.

Bridling between LP1 points on different trusses can be achieved carrying a 1000kg SWL to a maximum of 45 degrees. Bridling between LP1 points on the same truss can be achieved carrying a 500kg SWL to a maximum of 45 degrees.



Load Point Type 2 (LP2)

LP2's can carry up to a maximum 500kg SWL "vertically".

Adjacent to LP2 is an available redundant or safety hanging point located approximately 300mm away that also carries a maximum 500kg SWL "vertically". This is designed for safety rigging for the first point. Either one of these points can be loaded with the maximum of 500kg SWL "vertically" or alternatively the load can be spread over the 2 points to a maximum of 500kg combined load.

LP2's can be found around the perimeter of the Big Top where the concrete wall finishes and the truss begins.

No bridling is allowed between LP1 and LP2 hanging points. Spreader beam configurations can be used but will require sign off by a building engineer.

Load Point Type 3 (LP3)

LP3's can carry up to a maximum vertical load of 100kg SWL "vertically".

These hanging points are available due to duct work being positioned over existing LP1's and are located around the duct work toward the suspended plant room.

Bridling between these points is forbidden.

Spreader Beams

At the southern end of the building a series of spreader beams have been installed to assist in rigging of lighting grids etc. Each beam is fitted with a dolly that can travel along the length of the beam. There are two types of dollies. Type A are installed on the second and third bays of spreader beams and Type B are installed on the beams in the bay closest to the southern wall. Type A can carry up to a maximum vertical load of 1000kg "vertically". Type B can carry up to a maximum vertical load of 500kg "vertically". Bridling between these dollies is forbidden.

STAGING

SICO Fold n' Set Stage:

Reversible decks (Black Tuff-Deck surface or grey carpeted surface)
Standard stage size 16.8m x 8.4m (49 sections)
30 additional stage sections available (price available on application)
1 x nine rise step with wheels and guard rails.
27m (8' sections) of guard rails.
Load capacity: 125lbs/sq. foot or 16000lbs sway load
Stage Leg Height: 1.2 to 1.8m
Skirt for front of stage 16.8m (7 pieces of 2.4m wide each)
LPS staff will erect and dismantle the stage to the hirers specifications.

Megadeck Risers:

1 x Megadeck Alloy Black Carpet Top Rolling Drum Riser*
2.4m x 2.4m (2 sections 8'x4')
6 x 600mm high legs with lockable, rolling wheels
6 x 350mm high legs with lockable, rolling wheels

1 x Megadeck Alloy Black Timber Top Rolling DJ Riser*
2.4m x 600mm
4 x 900mm high legs with lockable, rolling wheels

*Price available on application



BARRIER

Framelock Crowd Barrier:

80 x hi-tensile aluminium interlocking anti-trip straight panels
8 x hi-tensile aluminium interlocking adjustable double hinge corner panels
(Swivels 0° - 360°)

PYROTECHNICS

Only suitably qualified persons are able to provide, operate and control any pyrotechnics and other related displays. Prior to commencement a detailed risk assessment must be submitted. Only after the Venue Manager has approved the above will the display be permitted to proceed.

DRAPES, SETS & THEMING

All drapes, sets and materials brought into the Big Top for use in any production must comply with the relevant clauses stipulated in the Building Code of Australia. All materials are to be fire retarded in compliance with the relevant Australian Standards. Where required all materials are to be tagged and copies of relevant certificates forwarded to LPS prior to the event.

VESDA ISOLATION

A Very Early Smoke Detection and Alarm (VESDA) system is installed in the Big Top. Before the commencement of any pyrotechnic or related displays, hot work or use of theatrical smoke, dry ice or any other activity that may cause a false alarm, the VESDA must be isolated. Only the Luna Park Venue Manager or their representative can isolate the system. Security Control must also be notified whenever the VESDA is isolated and de-isolated. At all times that the VESDA is isolated a suitably qualified warden must be on fire watch duties. Unless previously agreed with the Venue Manager this warden will be from security personnel.

HOUSE LIGHTS

The auditorium has 40 LED Eco Lighting 75W LED Highbay Lamps (HBL75 tested power 79.4W ay 160LM/W). The highbays have *ramp* up & ramp down dimming control and are grouped into zones. Each zone can be controlled by the Dali, wall mounted, touch panel located at the rear of the building. The lamps can also be controlled by the event lighting console using the 5 pin DMX outlet located on the western wall on the mezzanine level.

ELECTRICAL

All electrical work in the Big Top must only be carried out by a qualified person in accordance with Australian Standards and Codes of Practice. Any work requiring direct intervention, modification or isolation of existing power distribution points can only be done by the on-site Luna Park Sydney Electrician.

ELECTRICAL LEAD & TOOL TAGGING

All electrical leads, portable power tools, junction boxes and earth leakage devices must be tested, inspected by a suitably qualified person and labelled with a tag of current date before being brought onto site.



In-House Production Specifications

IN-HOUSE AUDIO SYSTEM - Supplied by JPJ Audio (formerly Jands Production Services)

P.A – Main

- 16 L-Acoustics V-DOSC Enclosures
- 6 L-Acoustics dV-DOSC Enclosures

P.A - Subs/Infill

- 4 L-Acoustics ARCS Enclosure
- 8 L-Acoustics SB218 Sub-low Enclosure

P.A - Drive

- 1 L-Acoustics V-DOSC Drive Rack (2xDolby)

Monitor Speaker System

- 10 Clair 12AM monitor wedge
- 2 Clair 212AM speaker enclosure
- 4 Clair R-4 Series III Speaker Enclosure
- 2 Clair ML-18 sub-low speaker enclosure
- 3 Amplifier Racks, Amplifier Rack, 4mix 12AM (Crest)
- 1 Amplifier Racks, Amplifier Rack, ML18 (Crown MA9000i)
- 1 Amplifier Racks, Amplifier Rack, R4 (Crown MA9000i)

Microphones

- 1 Install System Cases, Mic Accessories Drawers case (Luna Park)
- 1 Shure, Beta 52A
- 12 Shure SM57 Microphone
- 2 Sennheiser MD-421 microphone
- 4 Shure SM81 Microphone
- 7 Shure Beta 58A
- 8 Klark Teknik DN 100
- 2 Dynamic Microphones, Shure 12A Dynamic Switch Mic

Radio Microphones

- 1 Shure, UR4D-L3e, dual receiver, 638-698 MHz
- 2 RF, Shure, UR2-L3e, handheld transmitter, 638-698 MHz
- 2 Shure Beta 58A capsule
- 2 Shure, Shure HandHeld Mic Clip WA371
- 2 Shure, ua-830wb, line amp (470-900MHz)
- 3 RF, Shure UA 820A Antenna (L3) Band)
- 1 RF Cables, BNC Antenna Cable RG8-X, 15.2m
- 1 RF Cables, BNC Antenna Cable RG8-X, 7.6m

- Sound Equipment

- 1 Install System Cases, FOH/Monitor Accessories Case (Luna Park)
- 1 Install System Cases, Cables Case, Mic/Power/Mon (Luna Park)
- 1 Multi - Mic Stands Case (Luna Park)
- 1 Multicore Case, Burndy 60ch Input 100m (Luna Park)
- 1 Multicore Systems, Multicore Case, Burndy 40ch Extension 50m



- Front of House

- 1 Digidesign Profile Digital Console
- 1 Digidesign Venue FOH Local Rack
- 1 Digidesign Venue Stage Rack (48in 32out)

- Monitors

- 1 Yamaha PM5D-RH 48ch Digital Console
- 1 Yamaha PM5D Power Supply Rack



IN-HOUSE LIGHTING RIG – supplied by Chameleon Touring Systems

- Front Truss:

5	Black Box Steel 18" @ 10'
1	Black Box Steel 18" @ 4'
4	1t Motors including Cable Pick
6	Mac Aura (wash)
4	Martin Mac Viper
7	1.2k Fresnel
6	Source 4 19deg

- Back Truss:

5	Black Box Steel 18" @ 10'
1	Black Box Steel 18 " @ 4'
4	1t Motors
6	Mac Aura (wash)
6	Martin Mac Viper
4	Atomic Strobe
4	LED Duet Blinders
4	9m x 9m Drapes

- Wing Drape Truss:

2	9m Black Tri Truss
2	Tab Track
4	500kg Chain Blocks
2	Sets of 2 x (3m x 7m) Black Drapes (7.6m from truss to the ground)

- Control / Effects:

2	Unique Hazers
1	GrandMA 2 ON PC
1	12 X 2K Dimmer
3	PSU 12 Way

- Power Distribution:

1	48 Way Rack CW/ 3 x PDS 12, (36-way Power Distro)
1	HP12, (12-way Dimmer), 2 x DD6 Data Splitters
1	PDS 450 Power lock Distribution

- Motor control:

1	8 Way Motor Control
---	---------------------

- Crew:

1	System Tech (Load In/Out Only) *
---	----------------------------------

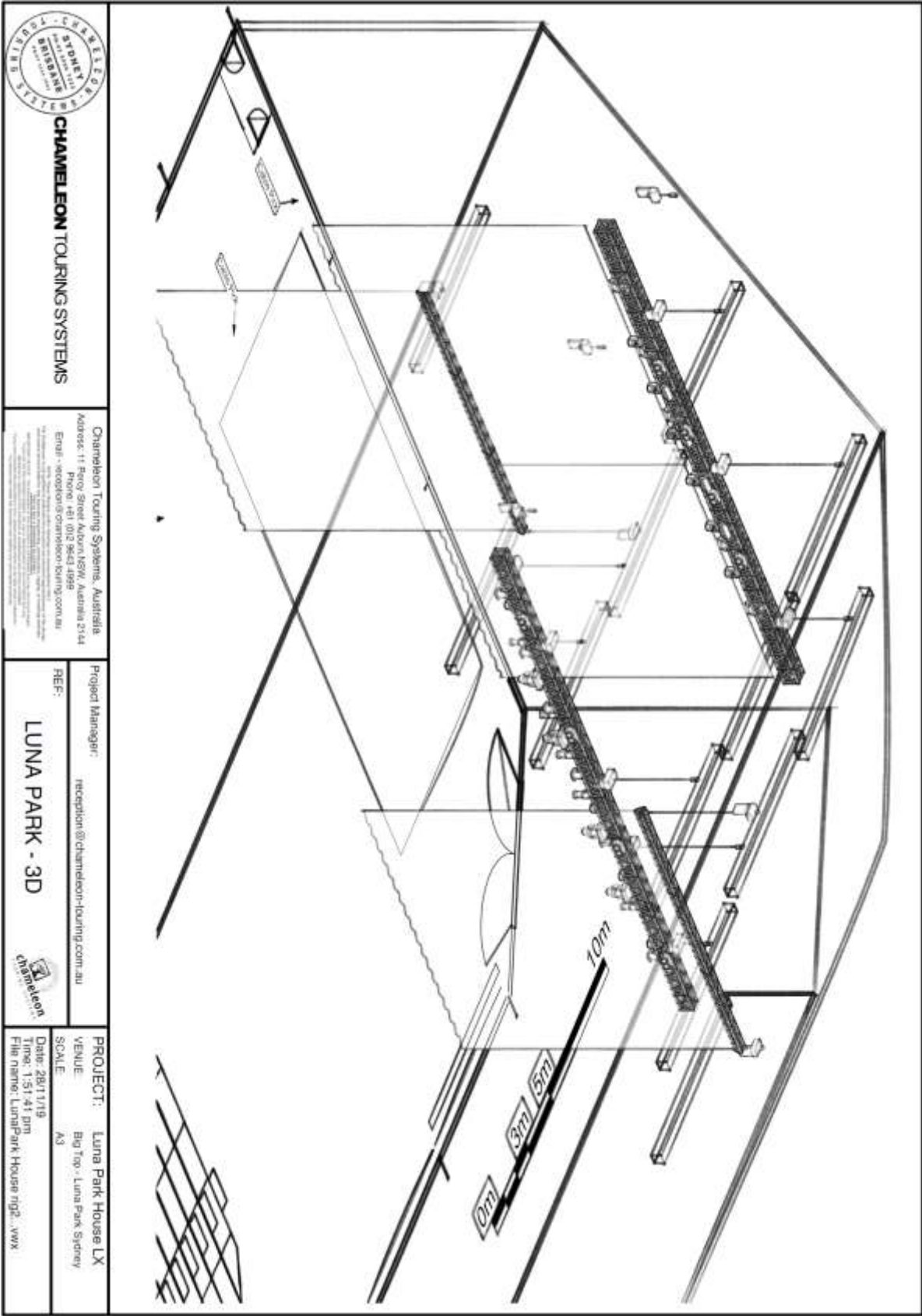
In-House Truss Weights:

Weight of Front Truss: 950kg / Maximum load: 3000kg / Available: 2050kg
Weight of Rear Truss: 1015kg / Maximum load: 1500kg / Available: 485kg

*Please note that if the show requires the lights to be programmed and operated additional cost will apply.

HOUSE PRODUCTION RIGGING PLAN (not to scale)

 <p>CHAMELEON TOURING SYSTEMS</p>	 <h1>LIGHTING HANDBOOK</h1>
<p>Chameleon Touring Systems, Australia Address: 11 Percy Street Auburn NSW Australia 2144 Phone: +61 604 9640 8999 Email: info@chameleon-touring.com.au</p>	
<p>Project Manager: reception@chameleon-touring.com.au</p> <p>REF: LUNA PARK - BIGTOP LX</p> 	
<p>PROJECT: Luna Park House LX VENUE: Big Top - Luna Park Sydney SCALE: A3</p> <p>Date: 25/1/19 Time: 8:44:45 am File name: Lunapark House rig2.vwx</p>	





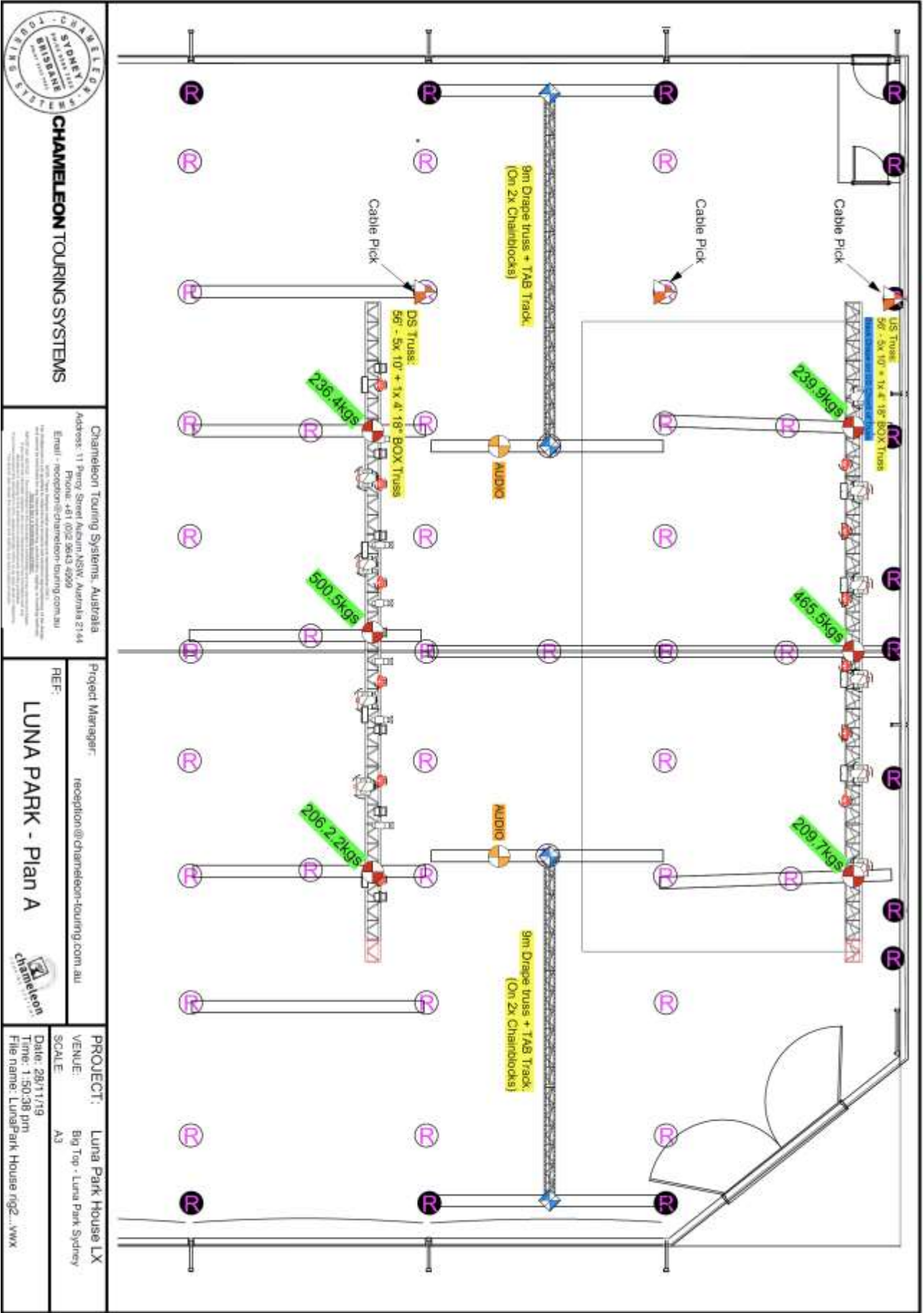
CHAMELEON TOURING SYSTEMS

Chameleon Touring Systems, Australia
 Address: 11 Snow Street Auburn NSW Australia 2144
 Phone: +61 02 9624 4099
 Email: info@chameleon-touring.com.au
www.chameleon-touring.com.au

Project Manager: reception@chameleon-touring.com.au
 REF: **LUNA PARK - 3D**


PROJECT: Luna Park House LX
 VENUE: Big Top - Luna Park Sydney
 SCALE: A3
 Date: 28/11/19
 Time: 1:51:41 pm
 File name: LunaPark-House.rpd_vv1

ID	Fixture	Universe	Address	Fitting	Mode	Position	Colour	Notes
101	Viper Profile	1	1	Trigger Clamp	Extended	DS Truss		
102	Viper Profile	1	35	Trigger Clamp	Extended	DS Truss		
103	Viper Profile	1	69	Trigger Clamp	Extended	DS Truss		
104	Viper Profile	1	103	Trigger Clamp	Extended	DS Truss		
201	Mac Aura	1	137	Half Coupler	Extended	DS Truss		
202	Mac Aura	1	162	Half Coupler	Extended	DS Truss		
203	Mac Aura	1	187	Half Coupler	Extended	DS Truss		
204	Mac Aura	1	212	Half Coupler	Extended	DS Truss		
205	Mac Aura	1	237	Half Coupler	Extended	DS Truss		
206	Mac Aura	1	262	Half Coupler	Extended	DS Truss		
1	LED Duet	1	287	Half Coupler	Dimmer	DS Truss		
2	LED Duet	1	288	Half Coupler	Dimmer	DS Truss		
3	LED Duet	1	289	Half Coupler	Dimmer	DS Truss		
4	LED Duet	1	290	Half Coupler	Dimmer	DS Truss		
105	Viper Profile	2	1	Trigger Clamp	Extended	US Truss		
106	Viper Profile	2	35	Trigger Clamp	Extended	US Truss		
107	Viper Profile	2	69	Trigger Clamp	Extended	US Truss		
108	Viper Profile	2	103	Trigger Clamp	Extended	US Truss		
109	Viper Profile	2	137	Trigger Clamp	Extended	US Truss		
110	Viper Profile	2	171	Trigger Clamp	Extended	US Truss		
207	Mac Aura	2	205	Half Coupler	Extended	US Truss		
208	Mac Aura	2	230	Half Coupler	Extended	US Truss		
209	Mac Aura	2	255	Half Coupler	Extended	US Truss		
210	Mac Aura	2	280	Half Coupler	Extended	US Truss		
211	Mac Aura	2	305	Half Coupler	Extended	US Truss		
212	Mac Aura	2	330	Half Coupler	Extended	US Truss		
301	Atomic 3000	2	355	Half Coupler	4ch	US Truss		
302	Atomic 3000	2	359	Half Coupler	4ch	US Truss		
303	Atomic 3000	2	363	Half Coupler	4ch	US Truss		
304	Atomic 3000	2	367	Half Coupler	4ch	US Truss		
5	LED Duet	2	371	Half Coupler	Dimmer	US Truss		
6	LED Duet	2	372	Half Coupler	Dimmer	US Truss		
7	LED Duet	2	373	Half Coupler	Dimmer	US Truss		
8	LED Duet	2	374	Half Coupler	Dimmer	US Truss		
21	1.2k Fresnel	2	401	Half Coupler	Dimmer	DS Truss		
11	S4 Profile	2	402	Half Coupler	Dimmer	DS Truss		
22	1.2k Fresnel	2	403	Half Coupler	Dimmer	DS Truss		
23	1.2k Fresnel	2	404	Half Coupler	Dimmer	DS Truss		
12	S4 Profile	2	405	Half Coupler	Dimmer	DS Truss		
13	S4 Profile	2	406	Half Coupler	Dimmer	DS Truss		
24	1.2k Fresnel	2	407	Half Coupler	Dimmer	DS Truss		
14	S4 Profile	2	408	Half Coupler	Dimmer	DS Truss		
15	S4 Profile	2	409	Half Coupler	Dimmer	DS Truss		
25	1.2k Fresnel	2	410	Half Coupler	Dimmer	DS Truss		
26	1.2k Fresnel	2	411	Half Coupler	Dimmer	DS Truss		
16	S4 Profile	2	412	Half Coupler	Dimmer	DS Truss		
27	1.2k Fresnel	2	413	Half Coupler	Dimmer	DS Truss		
901	Unquie	2	501			Floor SR		
901	Unquie	2	503			Floor SL		




CHAMELEON TOURING SYSTEMS

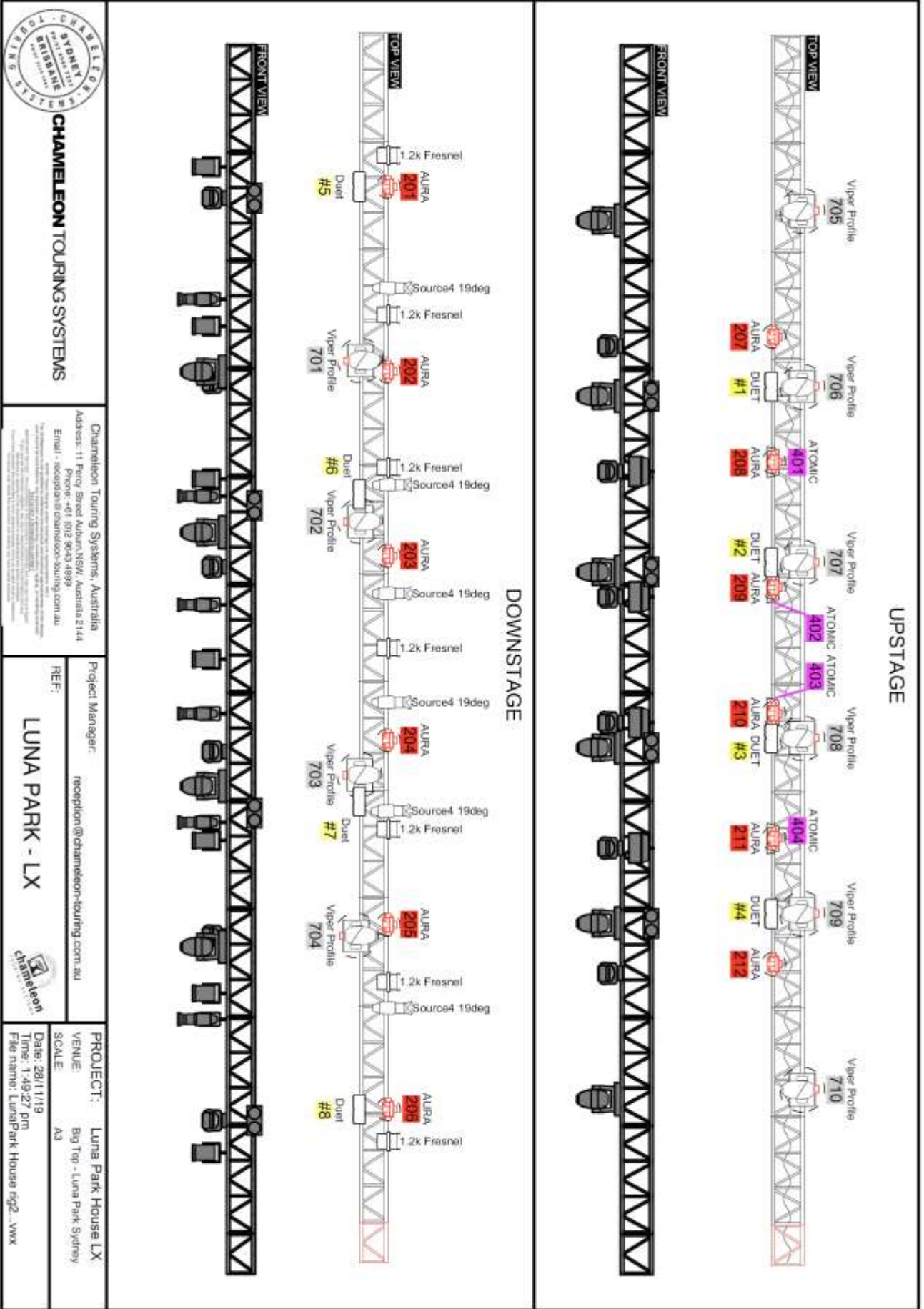
Chameleon Touring Systems, Australia
 Address: 11 Shery Street Auburn NSW, Australia 2144
 Phone: +61 (0)2 9643 4999
 Email: reception@chameleon-touring.com.au

Project Manager:
 reception@chameleon-touring.com.au

LUNA PARK - Plan A

PROJECT: Luna Park House LX
 VENUE: Big Top - Luna Park Sydney
 SCALE: A3

Date: 28/11/19
 Time: 1:50:38 pm
 File name: LunaPark_House_rfg2...vwx



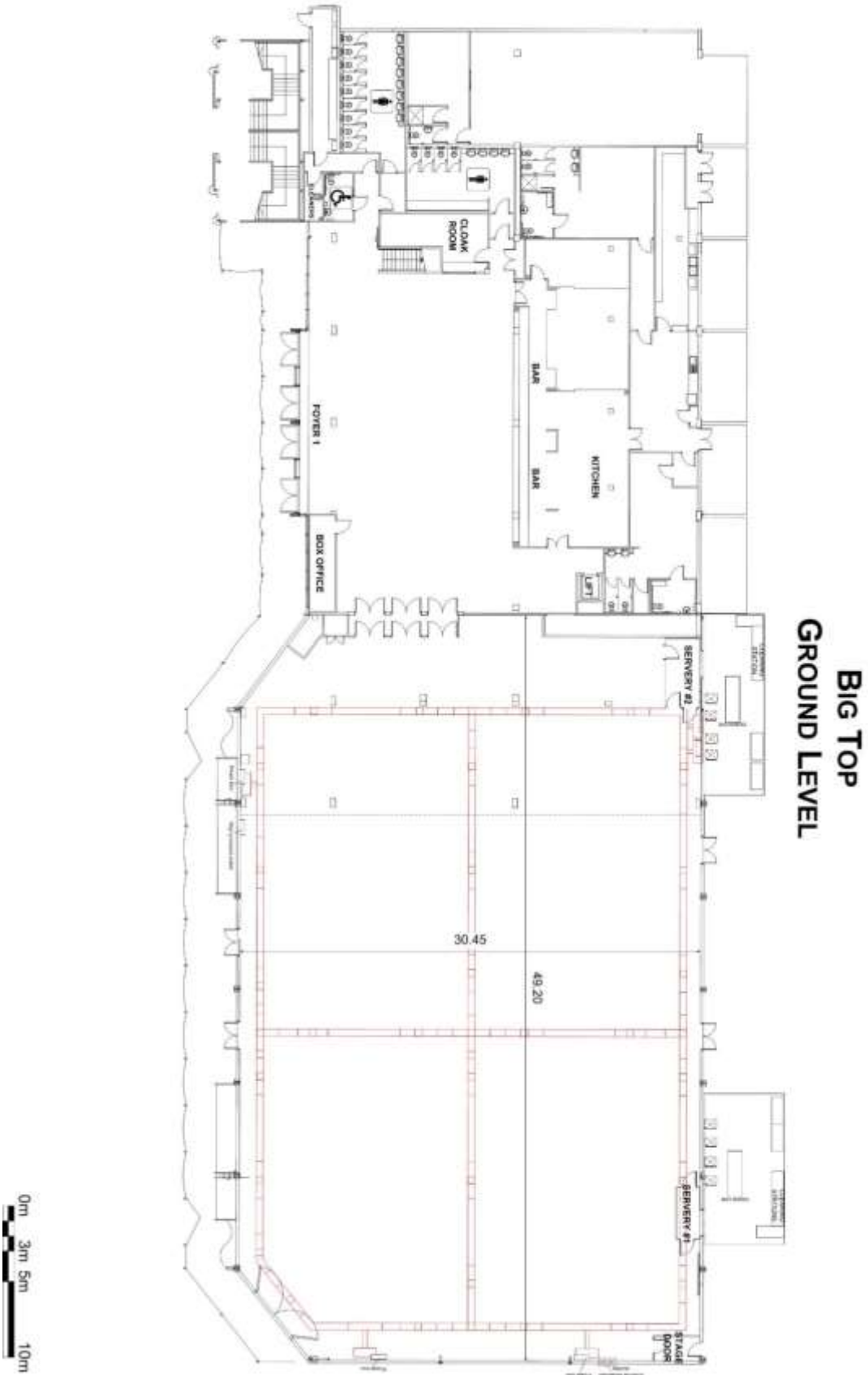
CHAMELEON TOURING SYSTEMS

Chameleon Touring Systems, Australia
 Address: 11 Frey Street Auburn NSW, Australia 2144
 Phone: +61 802 8043 8888
 Email: scott@chameleon-touring.com.au

Project Manager: reception@chameleon-touring.com.au
 REF: **LUNA PARK - LX**

PROJECT: Luna Park House LX
 VENUE: Big Top - Luna Park Sydney
 SCALE: A3
 Date: 28/11/19
 Time: 1:49:27 pm
 File name: LunaPark House egg2...vwx

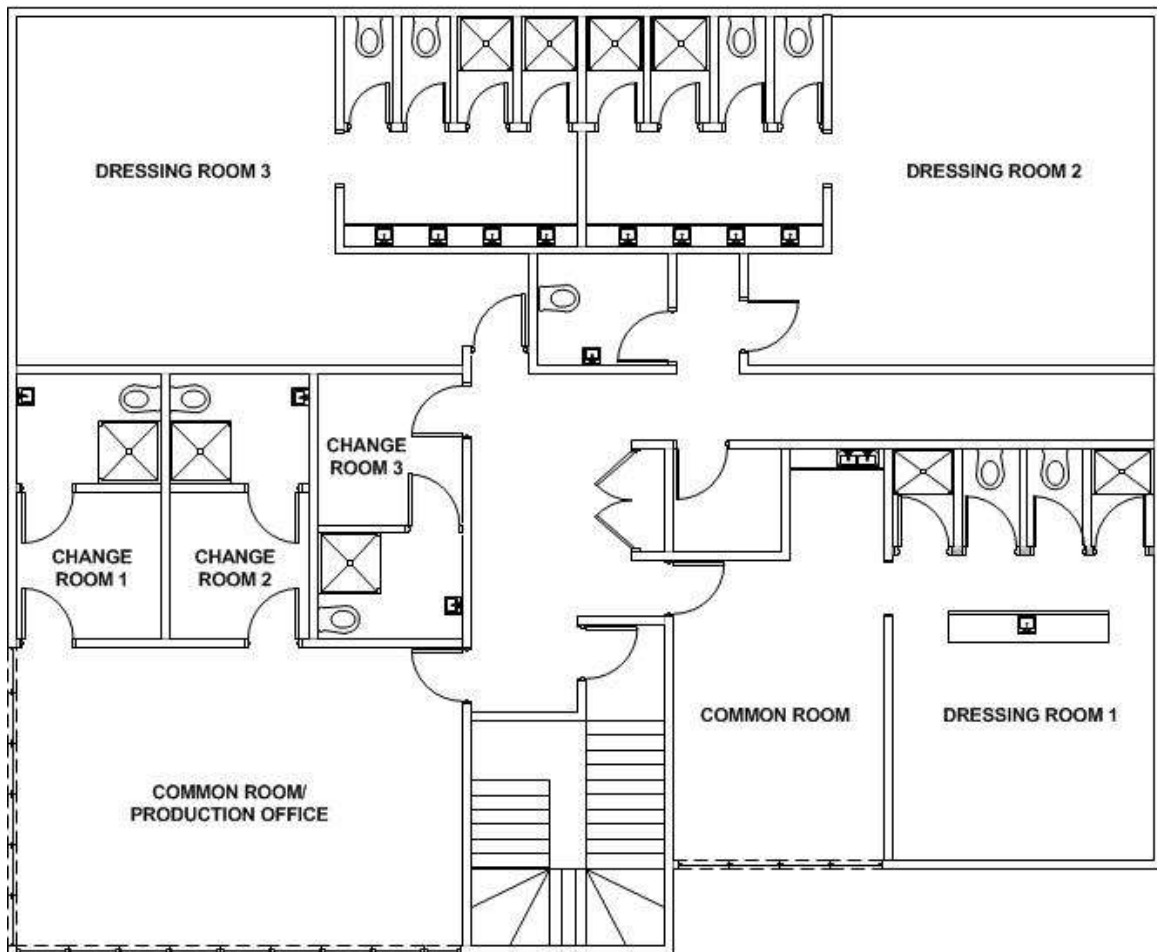
VENUE FLOOR PLANS (not to scale)





**BIG TOP
LEVEL 1**

BIG TOP GREEN ROOMS



LOADING DOCK & DELIVERY INSTRUCTIONS

The **LOADING DOCK** is accessible via the Luna Park Car Park (cnr Paul & Northcliff St).

Press intercom at boom gate, and advise security you have a delivery for *NAME OF EVENT*. It is best to call ahead to ensure there is a parking spot available.

Access is available free of charge for **15mins**. Parking costs are the responsibility of the driver.

Height restriction – 1.9m.

NOTE: Car park gates are locked between midnight – 7am.

Security Control: 02 9033 7595

Deliveries **DIRECT** to the BIG TOP Auditorium must be **APPROVED** prior by the Events team.

Access is via 1 Olympic Drive. There is a vehicle gate at the entrance to the Park, located to the right of “The Face”.

Access is available until **ONE HOUR** prior to the park opening.

On no account can vehicles drive into the Park without an escort. They must also use hazard lights and drive at walking pace only.

If a **FORKLIFT** is required, please advise the Events team. The availability of the fork lift is restricted to working around the Park requirements. Please discuss your fork lift requirements with the team, and whether an additional one will need to be hired.

Vehicles can't re-enter the park for **BUMP OUT** until the rides are closed, or all guests have departed (whichever is later). Above procedures still apply.





WHS REGISTRATION & INDUCTION

Luna Park has safety policies and procedures based on current WHS regulations. These policies are for your protection and to alert you of any risks. It is your responsibility to ensure that you understand and follow these safety procedures, specific company safety regulations, signs and legal requirements that may apply to your job. For all events the following safe work practices will be implemented:

1. Do not commence any work until you have read and understood these safety procedures and know the safety requirements for your specific job. Ensure you have read and understood the SWMS provided by your employer.
2. The speed limit on site is 5km/hr and you must strictly observe this limit
3. You must be alert on and for forklifts, EWP's and any other moving vehicle.
4. Strictly no use of mobile phones in the BOH areas. This includes between the Dressing Room & Stage Door.
5. You must NOT touch any equipment unless you are authorized to work on or with that equipment and you have followed correct safety procedures.
6. Emergency evacuation procedures: on hearing or being aware of a fire, non-theatrical smoke, fire alarm or other emergency warning system, you MUST vacate to the nearest EXIT if safe to do so. Wardens and security personnel will direct you to an assembly point where you will remain until you are given further instructions.
7. You must report any unattended baggage or suspicious items immediately to Security. DO NOT interfere with or inspect any such item.
8. You must protect yourself if there is any risk of personal harm by wearing the correct PPE for your job. (ie safety helmets, footwear, eye and hearing protection and gloves)
9. You must report all injuries to the Safety Officer and/or Venue Manager.
10. You must report that your work area is safe at all times.
11. Practical jokes and horseplay are not permitted.
12. Access to Emergency Exits must not be obstructed in any way by materials or equipment. You must not interfere with any firefighting equipment, safety systems or fire detection systems.
13. Full body harnesses are required for all climbing personnel working above 1.8 metres.
14. All non-fixed electrical equipment must comply with Australian Standards and be tagged with the appropriately dated or coloured tag for that particular appliance.
15. Hand tools, ladders, "soft goods" and drapes must be all in safe and good condition and tagged where necessary.
16. Persons will NOT be permitted to commence or continue work on site if under the influence of drugs and alcohol. Smoking is strictly prohibited within any building at Luna Park.
In making the Big Top a safer working environment for all personnel it is the responsibility of the event production company/contractor/event organizer to meet the above obligations. Luna Park Sydney accepts no responsibility for the provision of equipment for these work practices.

EMERGENCY PROCEDURES:

1. If you see a fire or emergency situation:
 - Raise the alarm by activating a red or white break glass,
 - Notify the Communications Officer on a red WIP phone or
 - Call Security Control on 9033 7595
2. On the alarm being raised, be aware that there is an emergency situation. (Alert tone: Beep, Beep, Beep).
3. Prepare to evacuate the building.
4. Commence Evacuation when advised to do so.
5. Follow the Instructions given by the Wardens and evacuate the building (Evacuation Tone: Whoop, Whoop. This will be followed by an announcement over the Public Address System.).
6. Assist mobility impaired persons where possible.
7. Move well clear of the building, do not re-enter unless advised to do so by the Warden or Fire Brigade.
8. Proceed immediately to the designated assembly point to be accounted for.