



Big Top In-House Audio System

P.A System

- 16 JBL Vertec VT4888 Enclosure
- 16 JPS Sub Bass (1 x JBL 18") Enclosure
- 6 Meyer UPA 2C Speaker Enclosure
- 2 Amplifier Rack, Meyer UPA-2C (SR3000)
- 2 Amplifier Rack, Sub (Crown MA5002)
- 1 JBL Vertec VT4888 Drive Rack LUNA PARK
- 4 Amplifier Rack, Vertec (Crown MA5002)
- 1 Jands Ezicom 4ch Master Station

Front Of House

- 1 Midas Verona 480 Console (40 Mono + 8 Stereo)

Monitors

- 1 Midas Siena 480 48ch Console
- 10 Clair Bros 12AM Monitor Speaker Enclosure
- 2 Clair Bros 212AM Monitor Speaker Enclosure
- 2 Clair Bros ML18 Sublow Enclosure
- 1 Amplifier Rack, ML18 (Crown MA9000i)
- 3 Amplifier Rack, 4mix 12AM (Crest)
- 2 dbx 566 2ch Valve Compressor
- 4 dbx 160X 1ch Compressor/Limiter
- 4 Drawmer DS201 2ch Noise Gate
- 1 TC Electronic M5000 Digital Reverb (Single Engine)
- 4 dbx 1066 2ch Compressor/Gate
- 1 TC Electronic 2290 Digital Delay
- 1 Yamaha SPX990 Multi Effects Processor
- 2 Yamaha SPX1000 Multi Effects Processor
- 1 Denon DCD-695 CD Player
- 1 Multi - Mic Stands Case (Luna Park)
- 1 Multicore Case, Burndy 40ch Input 100m (Luna Park)
- 8 Urei 5547A Graphic Equaliser
- 1 Cables Case, Mic/Power/Mon (Luna Park)
- 1 Klark Teknik DN60 Analyser

Microphones

- 4 Shure SM81 Condenser Mic
- 7 Shure Beta58A Dynamic Mic
- 12 Shure SM57 Dynamic Mic
- 1 Shure Beta52A Dynamic Mic
- 4 Sennheiser MD-421 Dynamic Mic
- 2 Shure 12A Dynamic Switch Mic
- 8 Klark Teknik DN100 Active DI
- 1 Shure U4D-MA 2ch Receiver
- 2 Shure U2-MA Handheld Transmitter
- 2 Shure U2/UR2 Beta58A Mic Capsule
- 2 Shure HandHeld Mic Clip
- 2 Shure UA830A Antenna Booster
- 2 Shure UA820A Dipole Half Wave Antenna
- 1 BNC Antenna Cable RG8-X, 15.2m
- 1 BNC Antenna Cable RG8-X, 7.6m
- 3 Beyer DT-109 Dual Muff Headset (Beige)
- 1 JANDS E401 COMMS UNIT
- 1 JANDS E401 COMMS PACK
- 1 Clearcom Telephone Handsets

Rigging

- 2 Lodestar 1ton Chain Motor, 60'
- 2 System Techs (8 hour call) (Additional \$45/hour per Tech)

Big Top In-House Lighting Rig

Lighting Rigging

12	10' 18" Box Truss
6	1t Chain Motor
1	Rigging Kit
1	Fall Arrester
1	Static Line 60'
1	Wire Ladder
1	8way Motor Control

Wing Curtains + Rigging

8	3m Tri Truss
4	500kg Chain Block
4	6m Tab Track Rail
4	6m x 6m Black Drape
2	12m x 900mm Black Border

Back Truss Curtains

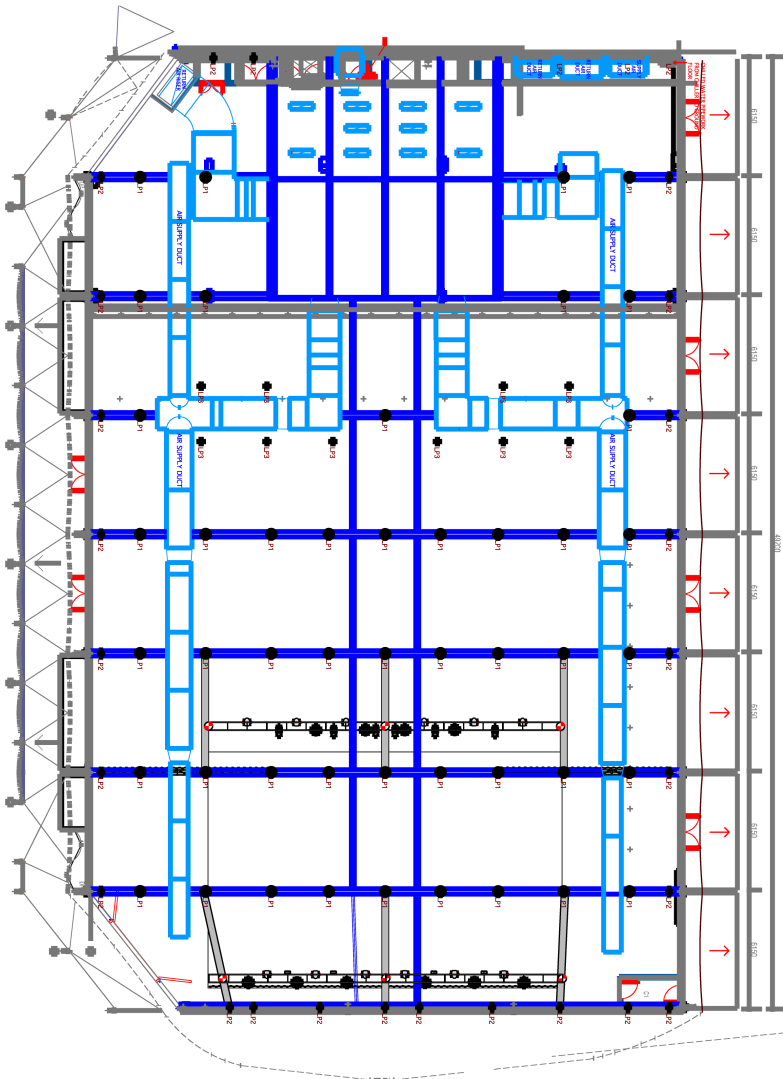
3	6m x 6m black drape
---	---------------------

Basic Lighting Rig

12	Mac 600 Wash/Studio Color
10	Mac 500 Profile
6	Shakespeare Profile
2	Oil Cracker/Hazer
4	Molefay Duet
1	Hog 1k Console
1	24way Dimmer
1	24way GPO Distribution
1	Data Distribution
1	System Tech*

* Please note that if the show requires the lights to be programmed and operated then an additional cost may apply.

CIRCUS BUILDING - GROUND LEVEL



- LEGEND**
- J1 LANDING POINT 1 - (2 TONNE CAPACITY)
 - J2 LANDING POINT 2 - (500kg CAPACITY)
 - J3 LANDING POINT 2 - (500kg CAPACITY)
 - J4 LANDING POINT 2 - (500kg CAPACITY)
 - J5 LANDING POINT 2 - (500kg CAPACITY)
 - J6 LANDING POINT 2 - (500kg CAPACITY)
 - J7 LANDING POINT 2 - (500kg CAPACITY)
 - J8 LANDING POINT 2 - (500kg CAPACITY)
 - J9 LANDING POINT 2 - (500kg CAPACITY)
 - J10 LANDING POINT 2 - (500kg CAPACITY)
 - J11 LANDING POINT 2 - (500kg CAPACITY)
 - J12 LANDING POINT 2 - (500kg CAPACITY)
 - J13 LANDING POINT 2 - (500kg CAPACITY)
 - J14 LANDING POINT 2 - (500kg CAPACITY)
 - J15 LANDING POINT 2 - (500kg CAPACITY)
 - J16 LANDING POINT 2 - (500kg CAPACITY)
 - J17 LANDING POINT 2 - (500kg CAPACITY)
 - J18 LANDING POINT 2 - (500kg CAPACITY)
 - J19 LANDING POINT 2 - (500kg CAPACITY)
 - J20 LANDING POINT 2 - (500kg CAPACITY)
 - J21 LANDING POINT 2 - (500kg CAPACITY)
 - J22 LANDING POINT 2 - (500kg CAPACITY)
 - J23 LANDING POINT 2 - (500kg CAPACITY)
 - J24 LANDING POINT 2 - (500kg CAPACITY)
 - J25 LANDING POINT 2 - (500kg CAPACITY)
 - J26 LANDING POINT 2 - (500kg CAPACITY)
 - J27 LANDING POINT 2 - (500kg CAPACITY)
 - J28 LANDING POINT 2 - (500kg CAPACITY)
 - J29 LANDING POINT 2 - (500kg CAPACITY)
 - J30 LANDING POINT 2 - (500kg CAPACITY)
 - J31 LANDING POINT 2 - (500kg CAPACITY)
 - J32 LANDING POINT 2 - (500kg CAPACITY)
 - J33 LANDING POINT 2 - (500kg CAPACITY)
 - J34 LANDING POINT 2 - (500kg CAPACITY)
 - J35 LANDING POINT 2 - (500kg CAPACITY)
 - J36 LANDING POINT 2 - (500kg CAPACITY)
 - J37 LANDING POINT 2 - (500kg CAPACITY)
 - J38 LANDING POINT 2 - (500kg CAPACITY)
 - J39 LANDING POINT 2 - (500kg CAPACITY)
 - J40 LANDING POINT 2 - (500kg CAPACITY)
 - J41 LANDING POINT 2 - (500kg CAPACITY)
 - J42 LANDING POINT 2 - (500kg CAPACITY)
 - J43 LANDING POINT 2 - (500kg CAPACITY)
 - J44 LANDING POINT 2 - (500kg CAPACITY)
 - J45 LANDING POINT 2 - (500kg CAPACITY)
 - J46 LANDING POINT 2 - (500kg CAPACITY)
 - J47 LANDING POINT 2 - (500kg CAPACITY)
 - J48 LANDING POINT 2 - (500kg CAPACITY)
 - J49 LANDING POINT 2 - (500kg CAPACITY)
 - J50 LANDING POINT 2 - (500kg CAPACITY)
 - J51 LANDING POINT 2 - (500kg CAPACITY)
 - J52 LANDING POINT 2 - (500kg CAPACITY)
 - J53 LANDING POINT 2 - (500kg CAPACITY)
 - J54 LANDING POINT 2 - (500kg CAPACITY)
 - J55 LANDING POINT 2 - (500kg CAPACITY)
 - J56 LANDING POINT 2 - (500kg CAPACITY)
 - J57 LANDING POINT 2 - (500kg CAPACITY)
 - J58 LANDING POINT 2 - (500kg CAPACITY)
 - J59 LANDING POINT 2 - (500kg CAPACITY)
 - J60 LANDING POINT 2 - (500kg CAPACITY)
 - J61 LANDING POINT 2 - (500kg CAPACITY)
 - J62 LANDING POINT 2 - (500kg CAPACITY)
 - J63 LANDING POINT 2 - (500kg CAPACITY)
 - J64 LANDING POINT 2 - (500kg CAPACITY)
 - J65 LANDING POINT 2 - (500kg CAPACITY)
 - J66 LANDING POINT 2 - (500kg CAPACITY)
 - J67 LANDING POINT 2 - (500kg CAPACITY)
 - J68 LANDING POINT 2 - (500kg CAPACITY)
 - J69 LANDING POINT 2 - (500kg CAPACITY)
 - J70 LANDING POINT 2 - (500kg CAPACITY)
 - J71 LANDING POINT 2 - (500kg CAPACITY)
 - J72 LANDING POINT 2 - (500kg CAPACITY)
 - J73 LANDING POINT 2 - (500kg CAPACITY)
 - J74 LANDING POINT 2 - (500kg CAPACITY)
 - J75 LANDING POINT 2 - (500kg CAPACITY)
 - J76 LANDING POINT 2 - (500kg CAPACITY)
 - J77 LANDING POINT 2 - (500kg CAPACITY)
 - J78 LANDING POINT 2 - (500kg CAPACITY)
 - J79 LANDING POINT 2 - (500kg CAPACITY)
 - J80 LANDING POINT 2 - (500kg CAPACITY)
 - J81 LANDING POINT 2 - (500kg CAPACITY)
 - J82 LANDING POINT 2 - (500kg CAPACITY)
 - J83 LANDING POINT 2 - (500kg CAPACITY)
 - J84 LANDING POINT 2 - (500kg CAPACITY)
 - J85 LANDING POINT 2 - (500kg CAPACITY)
 - J86 LANDING POINT 2 - (500kg CAPACITY)
 - J87 LANDING POINT 2 - (500kg CAPACITY)
 - J88 LANDING POINT 2 - (500kg CAPACITY)
 - J89 LANDING POINT 2 - (500kg CAPACITY)
 - J90 LANDING POINT 2 - (500kg CAPACITY)
 - J91 LANDING POINT 2 - (500kg CAPACITY)
 - J92 LANDING POINT 2 - (500kg CAPACITY)
 - J93 LANDING POINT 2 - (500kg CAPACITY)
 - J94 LANDING POINT 2 - (500kg CAPACITY)
 - J95 LANDING POINT 2 - (500kg CAPACITY)
 - J96 LANDING POINT 2 - (500kg CAPACITY)
 - J97 LANDING POINT 2 - (500kg CAPACITY)
 - J98 LANDING POINT 2 - (500kg CAPACITY)
 - J99 LANDING POINT 2 - (500kg CAPACITY)
 - J100 LANDING POINT 2 - (500kg CAPACITY)

THIS DRAWING IS INTENDED TO BE USED AS A GUIDE FOR PLACEMENT OF THE HOUSE RIG AS SPECIFIED IN THE LIGHTING QUOTE. IT IS DEPENDENT ON THE POSITIONING OF THE HOUSE BRIDGING BEAMS (SHOWN IN GREY) TO ALLOW FOR THE APPROPRIATE AND BEST PLACEMENT OF LIGHTING TRUSS POINTS AS DRAWN ON THIS PLOT.

